




TÉCNICO CORPORATION
MARINE & INDUSTRIAL CONTRACTOR

www.tecnicocorp.com



TECHNOLOGY DRIVEN, CRAFTSMAN MADE.

CUSTOM SOLUTIONS
FROM CONCEPT TO CREATION.





AN EMPLOYEE-OWNED, CUSTOMER DRIVEN COMPANY.



100% EMPLOYEE-OWNED SINCE 2003

T
TÉCNICO



**ENSURING READINESS,
DELIVERING EXCELLENCE.
SAFETY, QUALITY, DEPENDABILITY IN EVERY PROJECT.**



CAPABILITIES

REPAIR, MAINTENANCE & MODERNIZATION

SHIP REPAIR

FABRICATION

**LABOR
SUPPORT**

SCAFFOLDING

HABITABILITY

**SUPPORT
SERVICES**

**SHIPBOARD
SYSTEMS**

MODERNIZATION

DIESEL ENGINE

**HI-VIS
COMPARTMENTS**

AFFILIATES





SHIP REPAIR REDEFINED: EFFICIENCY. PRECISION. INNOVATION.



SHIPBOARD SYSTEMS

- **COMBAT & DEFENSE**
- **AUXILIARY**
- **ELECTRICAL / ELECTRONIC**
- **HULL & DECK MACHINERY**
- **HABITABILITY**
- **PROPULSION**
- **NAVIGATION & SHIP'S CONTROL**

The background of the image is a dark, industrial scene. In the center-right, there is a bright, glowing point of light with numerous yellow and orange sparks radiating outwards, suggesting a welding or grinding process. The overall color palette is dominated by dark greens and blues. On the left side, there is a graphic element consisting of several overlapping hexagons in shades of light blue and white, with dark blue outlines. A solid red vertical bar is positioned to the left of the main text.

**DELIVERING EXCELLENCE IN,
MARINE AND INDUSTRIAL SERVICES.**



HABITABILITY

ENHANCING THE QUALITY OF SHIPBOARD LIFE

- SHIPBOARD QUALITY-OF-LIFE FACILITIES UPGRADES
- HABITABILITY INSTALLATION TEAM
- HIGH VISIBILITY COMPARTMENTS
- DIGITAL RENDERING CAPABILITIES | 3D MODELING
- FURNITURE FABRICATION & CUSTOM FURNISHING -
NAVY STANDARD CATALOG FURNITURE &
CUSTOM FURNITURE ITEMS
- METAL FABRICATION
- DECORATIVE POWDER COATING
- HONEYCOMB BULKHEAD PANELS | SHEATHING
- READY ROOM RECONFIGURATION
- NOMEX DECK PANELS



T
TÉCNICO



**INNOVATIVE SOLUTIONS,
FOR MISSION-CRITICAL SHIP REPAIR.**





TURN-KEY HABITABILITY

CUSTOMIZED SOLUTIONS - CUSTOM DESIGN, FABRICATION & INSTALLATION

Design & Installation of Upgrades of Shipboard Quality-of-Life Facilities & Furnishings:

- Ventilation Systems
- High Visibility Compartments
- Shipboard Joiner Systems
- Berthing Compartments
- Sanitary Spaces
- Galley & Scullery Spaces
- Commissary & Messing Spaces
- Chapels, Dental, Gym, Barber & Laundry Spaces
- Common Areas, Rec Spaces & Conference Rooms
- Office Spaces & Specialty Rooms
- Doors & Panels
- Storage Systems
- Accommodation Furnishings
- Work Space Furniture Systems



CUSTOM SOLUTIONS: CUSTOM-DESIGNED & CUSTOM-BUILT





**INNOVATIVE FABRICATION,
TIMELESS CRAFTSMANSHIP.**



FABRICATION

- **STRUCTURAL STEEL & ALUMINUM FABRICATION**
- **PRECISION METAL CUTTING**
- **MODULAR OUTFITTING | MODULAR CONSTRUCTION**
- **VENTILATION SYSTEM FABRICATION**
- **HABITABILITY COMPONENTS**
 - **BERTHING**
 - **ACCOMMODATION FURNISHINGS**
 - **FOOD SERVICES FACILITIES**
 - **LAVATORIES & HEADS**
 - **STORAGE SYSTEMS**
 - **HIGH VISIBILITY SPACES**
- **VENTILATION SYSTEM FABRICATION**
- **PAINTING & BLASTING**
- **POWDER COATING**
- **CUSTOM FABRICATION**
- **INDUSTRIAL & COMMERCIAL PRODUCTS TO CUSTOM SPECIFICATIONS**





**SPECIALIZED SERVICES,
SUPPORTING NATIONAL DEFENSE.**

T
TÉCNICO

A close-up photograph of a welder wearing a Lincoln Electric protective mask and gloves, working on a metal structure. The welder is using a torch to create a weld on a metal frame. The background is dark and out of focus.

**INNOVATIVE DESIGN, MASTERFUL EXECUTION:
CUSTOM MARINE & INDUSTRIAL SERVICES FROM START TO FINISH.**

T
TÉCNICO



MODERNIZATION

**ENHANCED MODERNIZATION &
ALTERATION INSTALLATION TEAM INTEGRATION**



**SUPPORTING FLEET MODERNIZATION
WITH PROVEN CAPABILITIES.**



COMPREHENSIVE PRODUCTION RESOURCES



PROVIDING INVALUABLE PROTECTION SSPC QP-1 COATINGS CERTIFICATION

T
TÉCNICO

SUPPORT SERVICES

ADMINISTRATIVE OVERHEAD STAFF ARE THE HIDDEN SUPPORT THAT HELPS DRIVE THE SUCCESS OF TÉCNICO.

- ENVIRONMENTAL, HEALTH & SAFETY
- QUALITY ASSURANCE
- ACCOUNTING
- PLANNING & SCHEDULING
- ESTIMATING
- CONTRACTS
- PURCHASING
- SUBCONTRACTS - VENDOR & SUPPLIER DATABASE
- WAREHOUSING
- TRADE DEVELOPMENT:
WORKFORCE DEVELOPMENT & TRAINING
- APPRENTICESHIP & MANAGEMENT
TRAINEE PROGRAM(S)
- LABOR SUPPORT
- PROJECT MANAGEMENT
- TRANSPORTATION & FACILITIES MANAGEMENT

A photograph of three industrial workers in a factory. In the foreground, a large, circular metal mesh structure, possibly a fan or part of a machine, is visible. Three men are working on it. One man on the right is wearing a red cap, safety glasses, and a white shirt, looking intently at the work. Two other men are on the left, one wearing a grey cap and safety glasses, and another wearing a yellow safety vest. The background is a bright red wall. The text 'ENCOURAGING INNOVATION, INCREASING COLLABORATION' is overlaid in white and grey, with a red vertical bar to the left of the first line.

**ENCOURAGING INNOVATION,
INCREASING COLLABORATION**


T
TÉCNICO

A welder wearing a grey long-sleeved shirt, a welding mask, and gloves is working on a large metal frame in a workshop. The welder is holding a welding torch and a rod, creating a bright spark at the point of contact. The background shows various industrial equipment and a red wall. The text "UNWAVERING DEDICATION TO SAFETY, QUALITY, DEPENDABILITY & COST-EFFECTIVENESS." is overlaid on the image in a bold, white, sans-serif font. A red vertical bar is on the left side of the text.

**UNWAVERING DEDICATION TO
SAFETY, QUALITY, DEPENDABILITY & COST-EFFECTIVENESS.**

The logo for "TÉCNICO" features a large, stylized red letter "T" with a black outline. The word "TÉCNICO" is written in a bold, black, sans-serif font across the middle of the "T".

TÉCNICO



PROUD SMALL BUSINESS ADMINISTRATION 8(A) PROGRAM GRADUATE





MAXIMIZING WORKER PERFORMANCE

PRODUCTIVITY, PROFITABILITY & SCHEDULE PREDICTABILITY



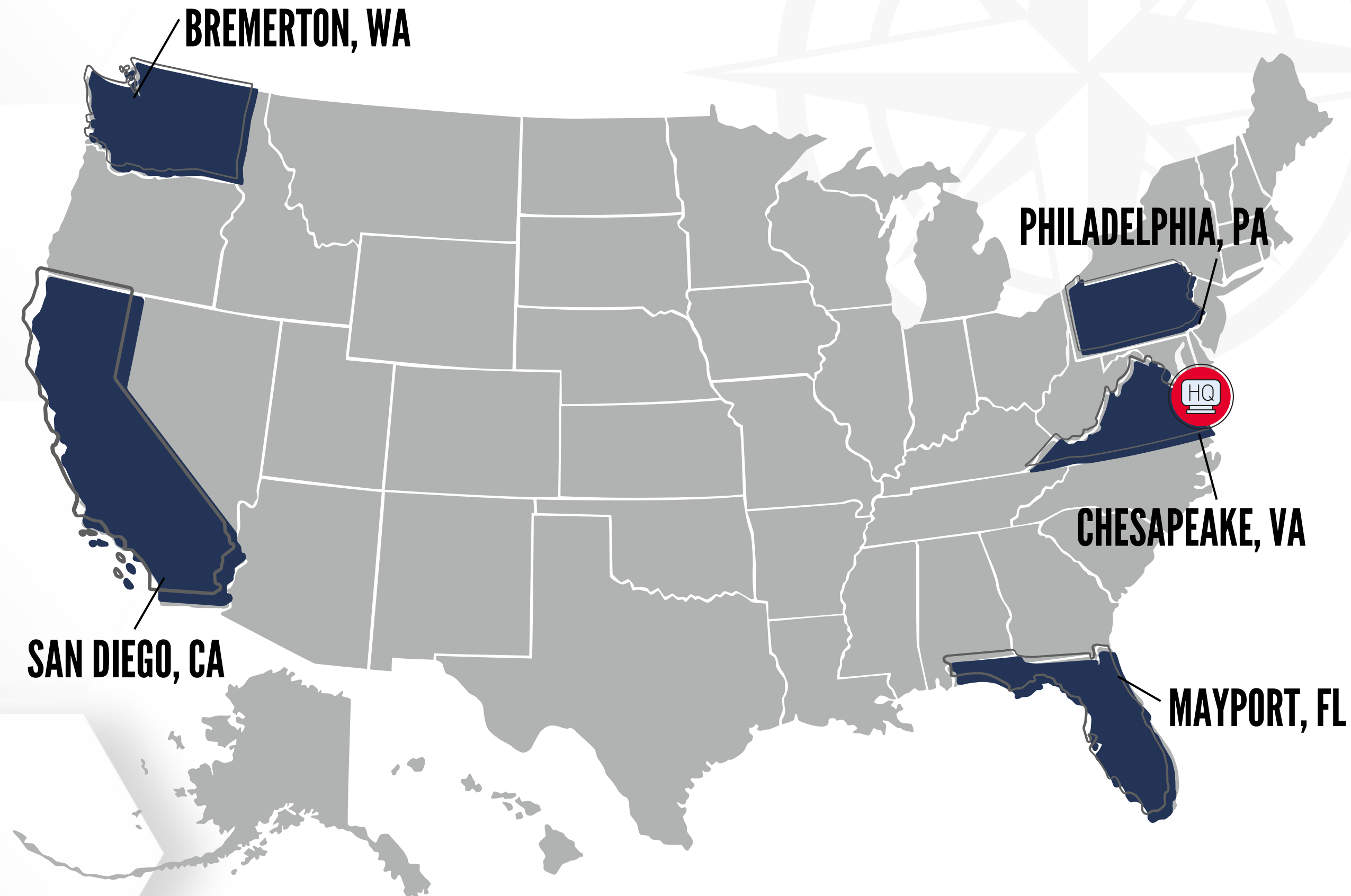
WHERE WE ARE

**TÉCNICO SUPPORTS THE U.S. FLEET
WORLDWIDE & IN PORTS ACROSS THE
U.S. WITH FACILITIES/OFFICES IN:**

Chesapeake Headquarters, Virginia
Newport News, Virginia
Mayport, Florida
Philadelphia, Pennsylvania
Bremerton, Washington
San Diego, California

+ PCE Locations: San Diego, California
Aiea, Hawaii
Everett & Bremerton, Washington

+ Steady support in Japan





**FROM THE ATLANTIC TO THE PACIFIC,
WE GO WHERE THE WORK IS.**



| WEST COAST

SAN DIEGO, CA | BREMERTON, WA



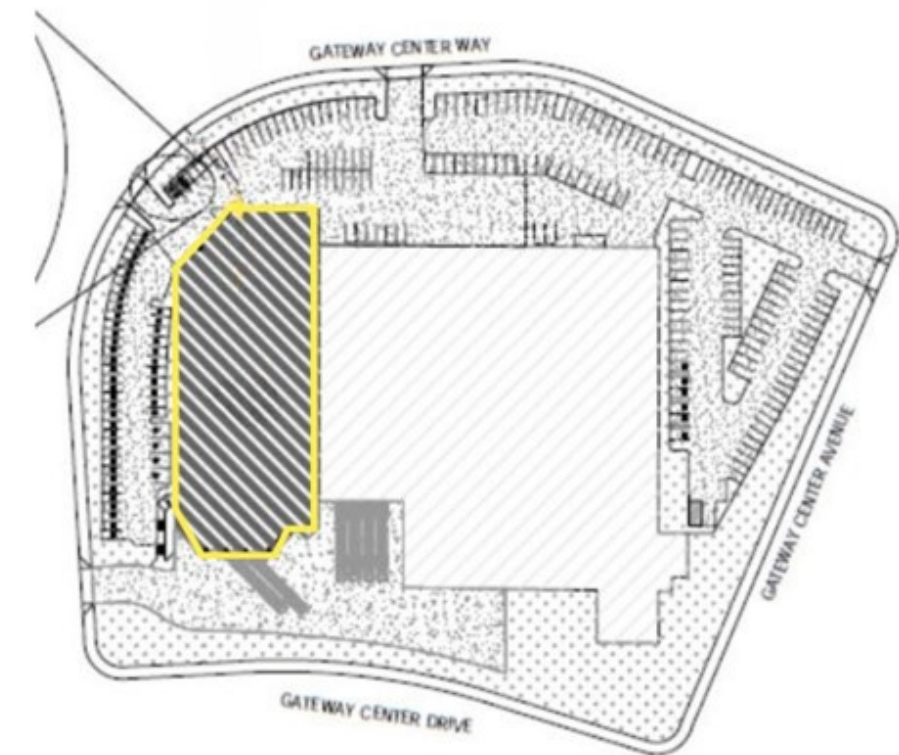


WEST COAST BUSINESS UNIT - CALIFORNIA

SAN DIEGO, CALIFORNIA

3636 GATEWAY CENTER AVE.
#101
SAN DIEGO, CA 92102

WITHIN 5 MILES OF NAVAL
BASE SAN DIEGO





WEST COAST BUSINESS UNIT - WASHINGTON

BREMERTON, WASHINGTON

7765 NW ELDORADO BLVD
BREMERTON, WA 98312

WITHIN 10 MILES OF
NAVAL BASE KITSAP



BANGOR



BREMERTON



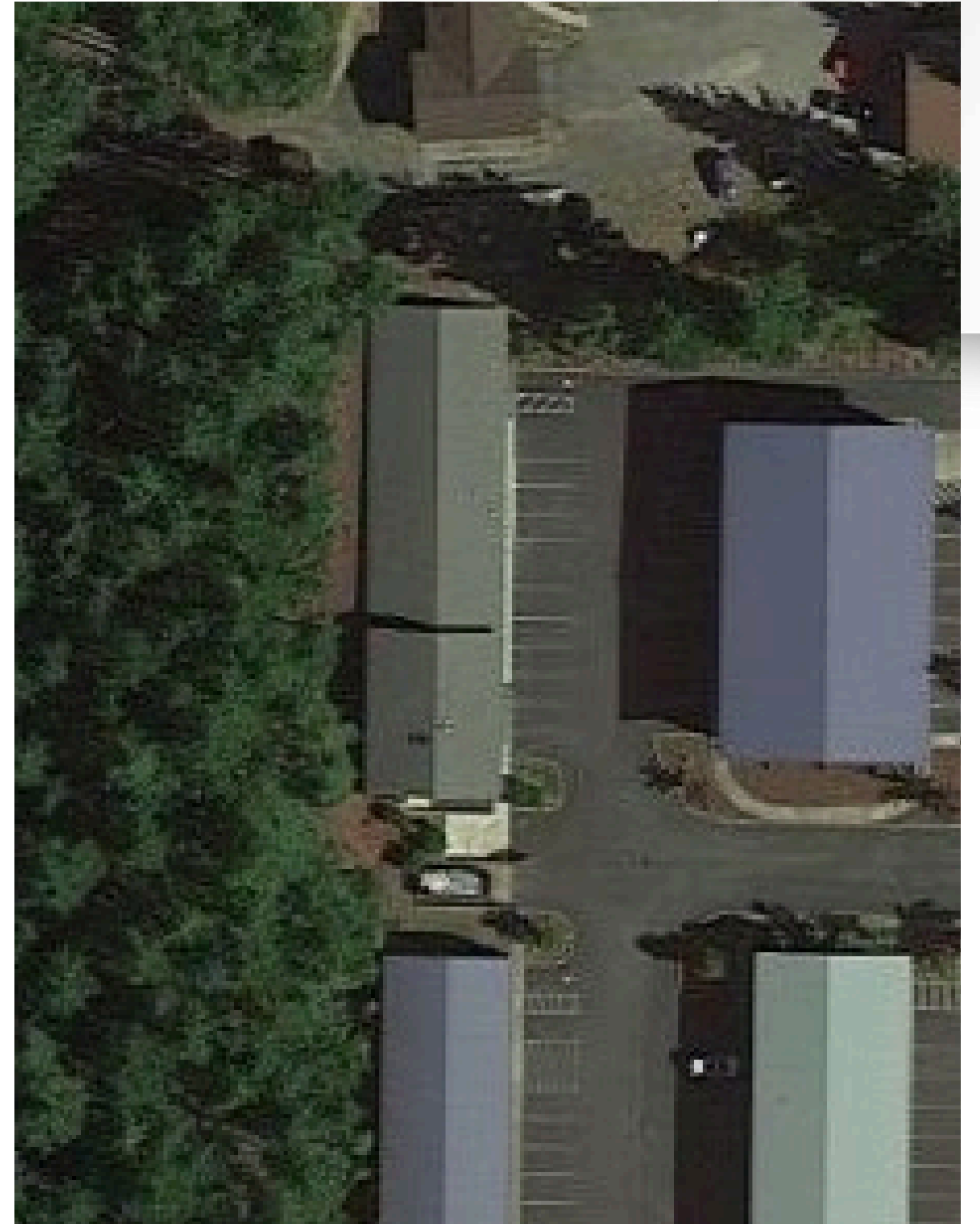
JACKSON PARK



KEYPORT



MANCHESTER





| EAST COAST

CHESAPEAKE, VA - CORPORATE CAMPUS | PHILADELPHIA, PA | MAYPORT, FL

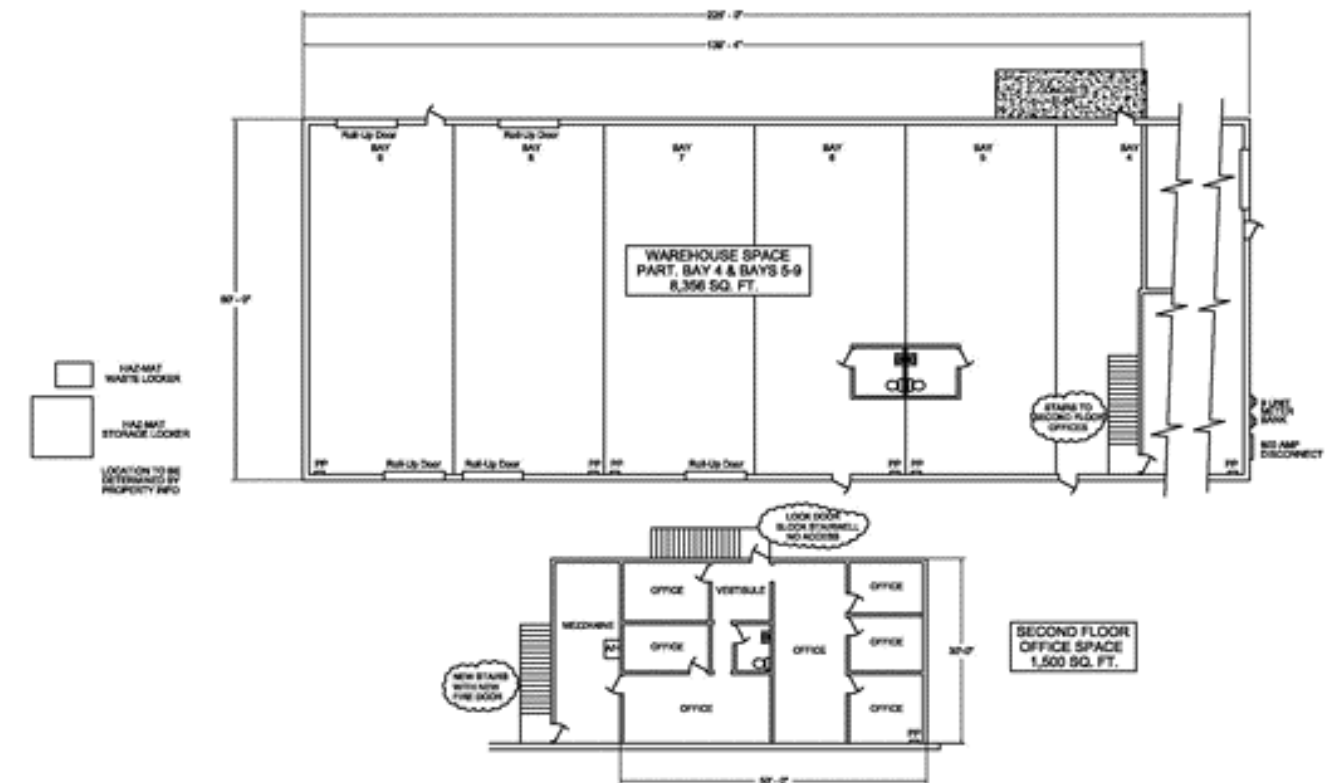
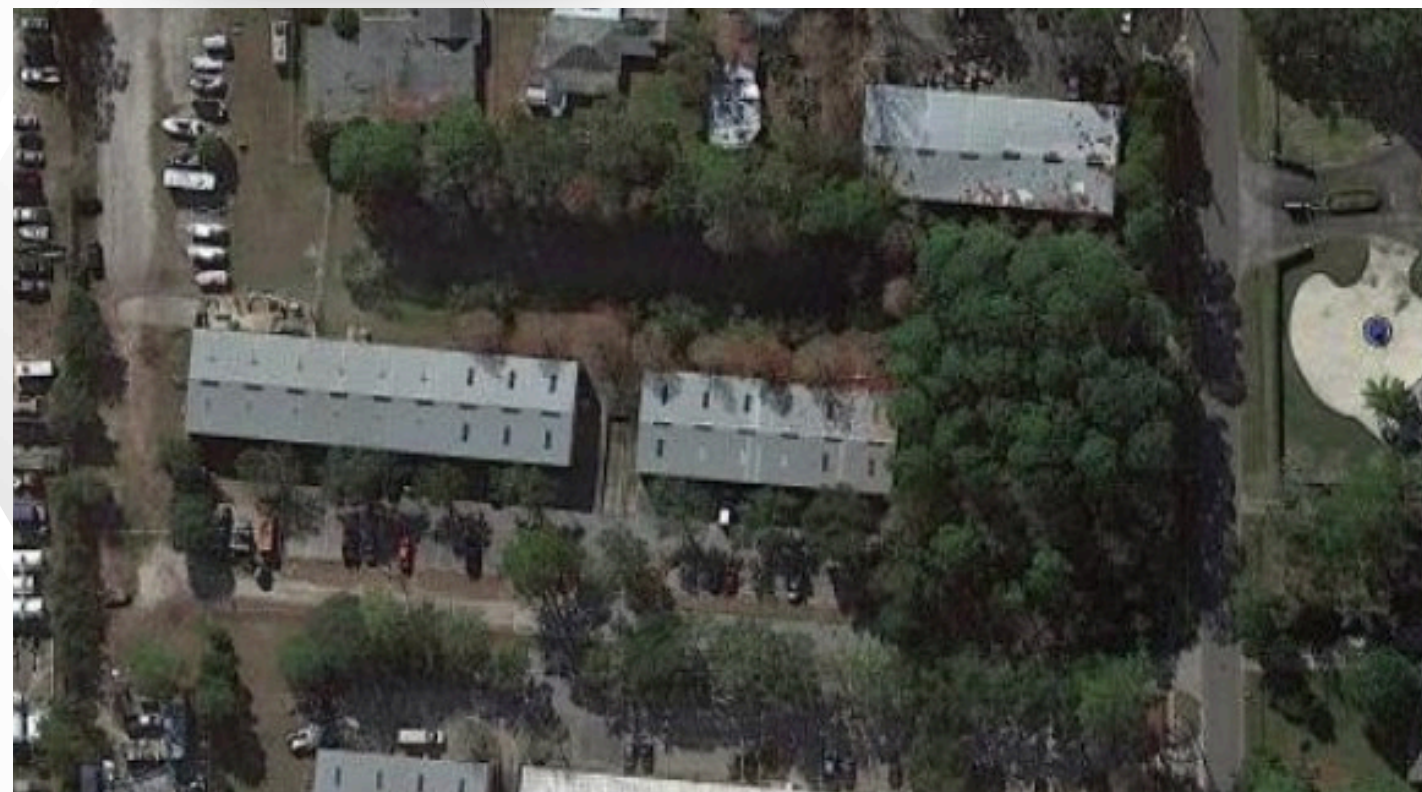


EAST COAST - FLORIDA BUSINESS UNIT

MAYPORT, FLORIDA

1543 MAIN STREET - STE. 5
ATLANTIC BEACH, FL 32233

WITHIN 3.5 MILES OF
NAVAL STATION MAYPORT



A graphic element on the left side of the main title. It consists of a solid red vertical bar. To its right is a grey silhouette of the state of Virginia. Overlaid on the Virginia map is a large, semi-transparent image of the mast and upper structure of a US Navy ship, with an American flag visible. The ship's mast is complex, with various antennas and platforms.

VA BUSINESS UNIT

CHESAPEAKE CORPORATE CAMPUS | EMPIRE SCAFFOLDING | NEWPORT NEWS FACILITY | OFFICE SPACE PHILADELPHIA, PA





CHESAPEAKE CORPORATE CAMPUS

VIRGINIA BUSINESS UNIT

831 INDUSTRIAL AVE
CHESAPEAKE, VA 23324

3.5 ACRES | 6 BUILDINGS
324,721 SQFT CAMPUS

+ OFFICE | WAREHOUSE SPACE - NEWPORT NEWS, VA
OFFICE SPACE - PHILADELPHIA, PA

HOME TO:



Apprentice Program
Accredited Apprenticeship



TécFAB Division
Build-to-Print Fabrication Facility



Empire Scaffolding Division
Scaffold Services

OFFICE SPACE

± 40,000 sqft
+Newport News Office
+Philadelphia Office

FABRICATION | SHOP

± 109,810 sqft

Build-to-Print Fabrication:
±80,000 sqft
Shop: ± 30,000 sqft

STORAGE

46,440 sqft

RECEIVING | WAREHOUSING

± 76,500 sqft

+ 53,000 sqft
NN Warehouse Facility





**COMPREHENSIVE CAPABILITIES FOR
COMPLEX MARINE NEEDS.**



T
TÉCNICO

TÉCNICO APPRENTICESHIP PROGRAM: SUSTAINING THE SHIPBUILDING HERITAGE



EMPIRE SCAFFOLDING DIVISION



T
TÉCNICO

A man wearing a black cap and a bright yellow high-visibility vest is operating a CAT machine. He is seated in the cab, looking out the window. The machine's arm and bucket are visible in the foreground. The background shows a construction site with various materials and structures.

HIGHLY MOBILE WORKFORCE

EQUIPPED TO HANDLE COMPREHENSIVE RANGE OF MARINE & INDUSTRIAL NEEDS

T
TÉCNICO

TL1055C



**PRECISION FABRICATION
POWERED BY INNOVATION.**

T
TÉCNICO



TÉCFAB DIVISION

FULLY OUTFITTED INDUSTRIAL FABRICATION FACILITY



The background of the image is a close-up, high-contrast photograph of a honeycomb panel. The hexagonal cells of the panel are clearly visible, and bright light rays emanate from the top center, creating a dramatic, sunburst effect. The overall color palette is dark, with the light rays providing a strong contrast.

HONEYCOMB PANELS

STRENGTH, DURABILITY & INSULATION PROPERTIES





TÉCFAB DIVISION:

FULLY OUTFITTED INDUSTRIAL FABRICATION FACILITY

70,000 SF & Growing Digital Manufacturing Facility



An aerial photograph of an aircraft carrier's deck, showing a long line of fighter jets parked in rows. The carrier is on the ocean, and the sky is visible in the background. The image has a teal color grade. A red vertical bar is on the left side of the text.

NAVIGATING THE FUTURE OF SHIP REPAIR WHERE TECHNOLOGY MEETS PRECISION





IMPROVING EFFICIENCY THROUGH UPDATED TOOLING & TECHNOLOGY

- **Trumpf 6kW Fiber Laser with Automation (New 2023)**
- **Trumpf TruTube Tube laser (New 2023)**
- **CR Onsrud G-Series 5 Axis Router (New 2023)**
- **FLOW Water Jet MACH 3 (4020b)**
- **Accupress Precision Press Brakes**
- **Automated Aluminum Extrusion Saw**
- **Automated Steel Extrusion Saw**
- **SDM 450-Ton Heated Platen Press (Honeycomb Products)**
- **Powder & Wet Spray Indexing Paint Line**
- **Powder & Wet Spray Batch Booths**
- **Robotic Welding – OTC Robotic Welding Cell**
- **IPG Fiber Laser Welding**
- **KEYENCE Marking Laser**
- **Habitability Design | Digital Rendering | Fabrication | Installation**

TÉCFAB : BUILD-TO-PRINT FABRICATION FACILITY

IMPROVING EFFICIENCY THROUGH UPDATED TOOLING & TECHNOLOGY

- **Trumpf 6kW Fiber Laser with Automation (Sept 2023)**
- **Trumpf TruTube Tube laser (Sept 2023)**
- **CR Onsrud G-Series 5 Axis Router (Dec 2023)**
- **FLOW Water Jet MACH 3 (4020b)**
- **Accupress Precision Press Brake 120 TON**
- **Accupress Precision Press Brake 175 TON**
- **Accupress Precision Press Brake 250 TON**
- **Accupress Precision Press Brake 500 TON**
- **SDM 450-Ton Heated Platen Press (Honeycomb Products)**
- **Powder & Wet Spray Indexing Paint Line**
- **Powder & Wet Spray Batch Booths**
- **Robotic Welding – OTC Robotic Welding Cell**
- **IPG Fiber Laser Welding**
- **KEYENCE Marking Laser**



TRULASER TUBE 7000 FIBER



6KW TRULASER 1030 FIBER WITH TRUSTORE AUTOMATION



5 AXIS ROUTER - CNC MACHINE



**WHERE TRADITION MEETS INNOVATION:
SEAMLESS FUSION OF SKILL & TECHNOLOGY**

T
TÉCNICO



FIBER LASER TECHNOLOGY

The background of the image is a dark, industrial scene. A robotic arm is visible in the upper center, with sparks and light trails emanating from its base. The scene is filled with numerous out-of-focus light spots in yellow, orange, and blue, creating a bokeh effect. In the bottom left corner, there are two overlapping light gray hexagonal shapes.

**CRAFTING CUSTOM SOLUTIONS
WITH CUTTING EDGE TECHNOLOGY**

T
TÉCNICO



TruLaser Tube 7000 Fiber

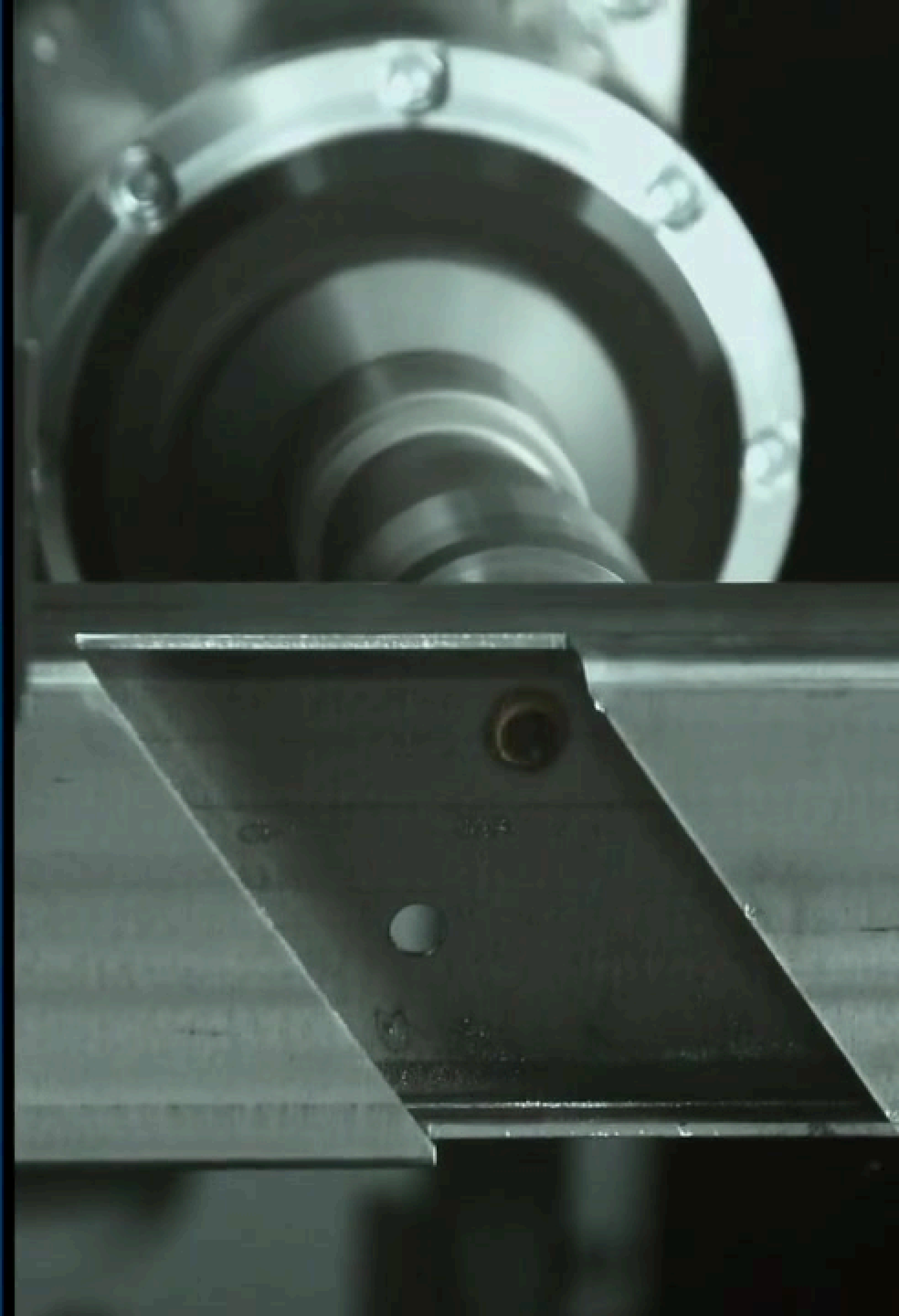
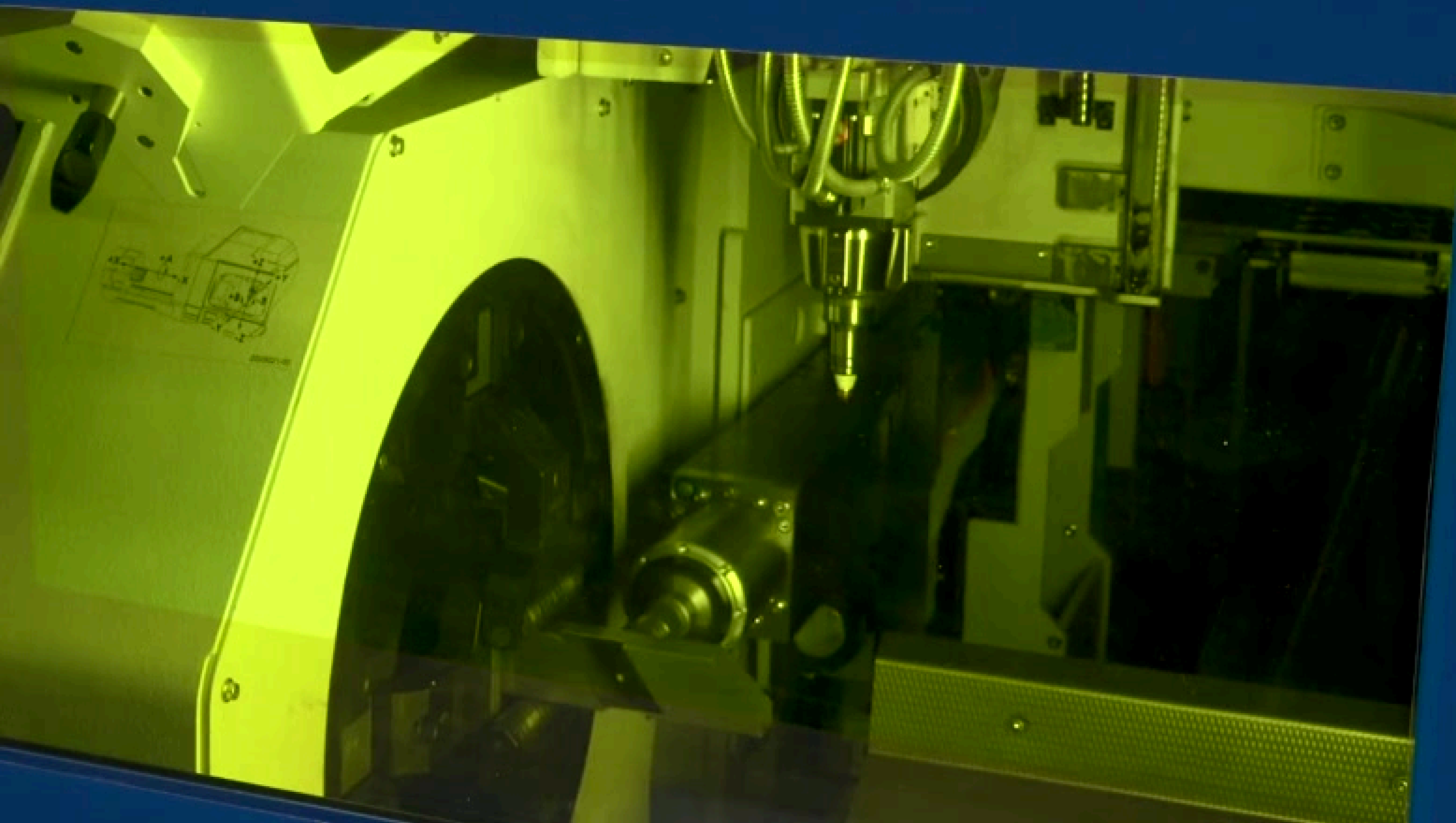




TruLaser Tube 7000 Fiber

- High Levels of Productivity
- CRES | Steel | Aluminum | Copper
- Angle | Channel | Round | Rectangular | Square Tube
- Finished Parts Up To 20' Long
- Tube & Open Architecture Parts up to 10" Diameter
- Thermal Drill & Tap

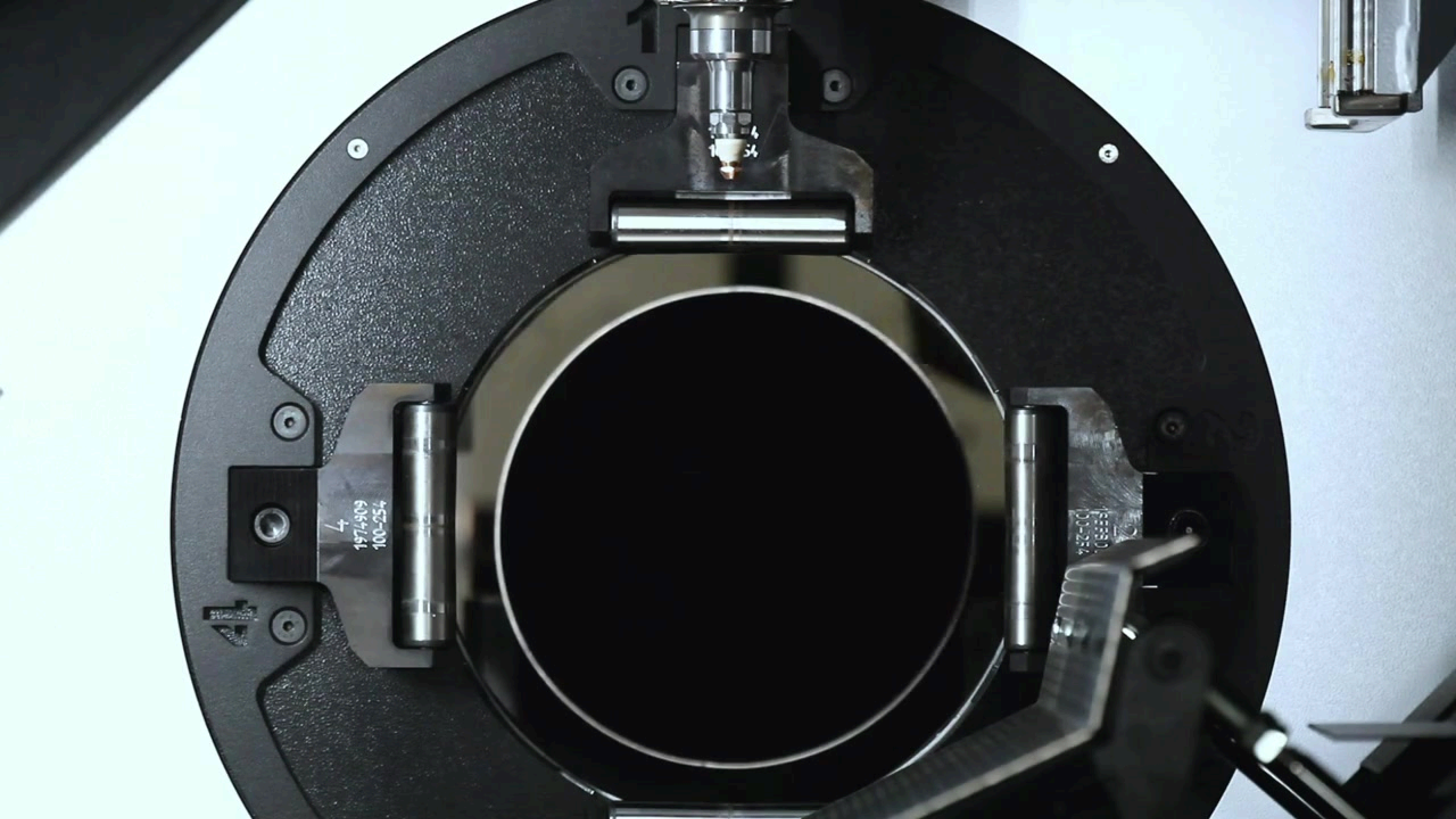
TruLaser Tube 7000





TECHNOLOGY AT THE CORE
CRAFTSMANSHIP IN EVERY DETAIL.







| Efficient production of small batches

FROM CONCEPT TO CREATION: LEADING THE WAY IN HIGH-TECH FABRICATION



T
TÉCNICO

A large industrial laser cutting machine, specifically a 6kw TruLaser 1030 Fiber, is shown in a factory setting. The machine is white and blue, with a long, flat bed for cutting materials. A robotic arm with a gripper is positioned above the bed, and a conveyor system is visible on the right side. The background shows a large industrial building.

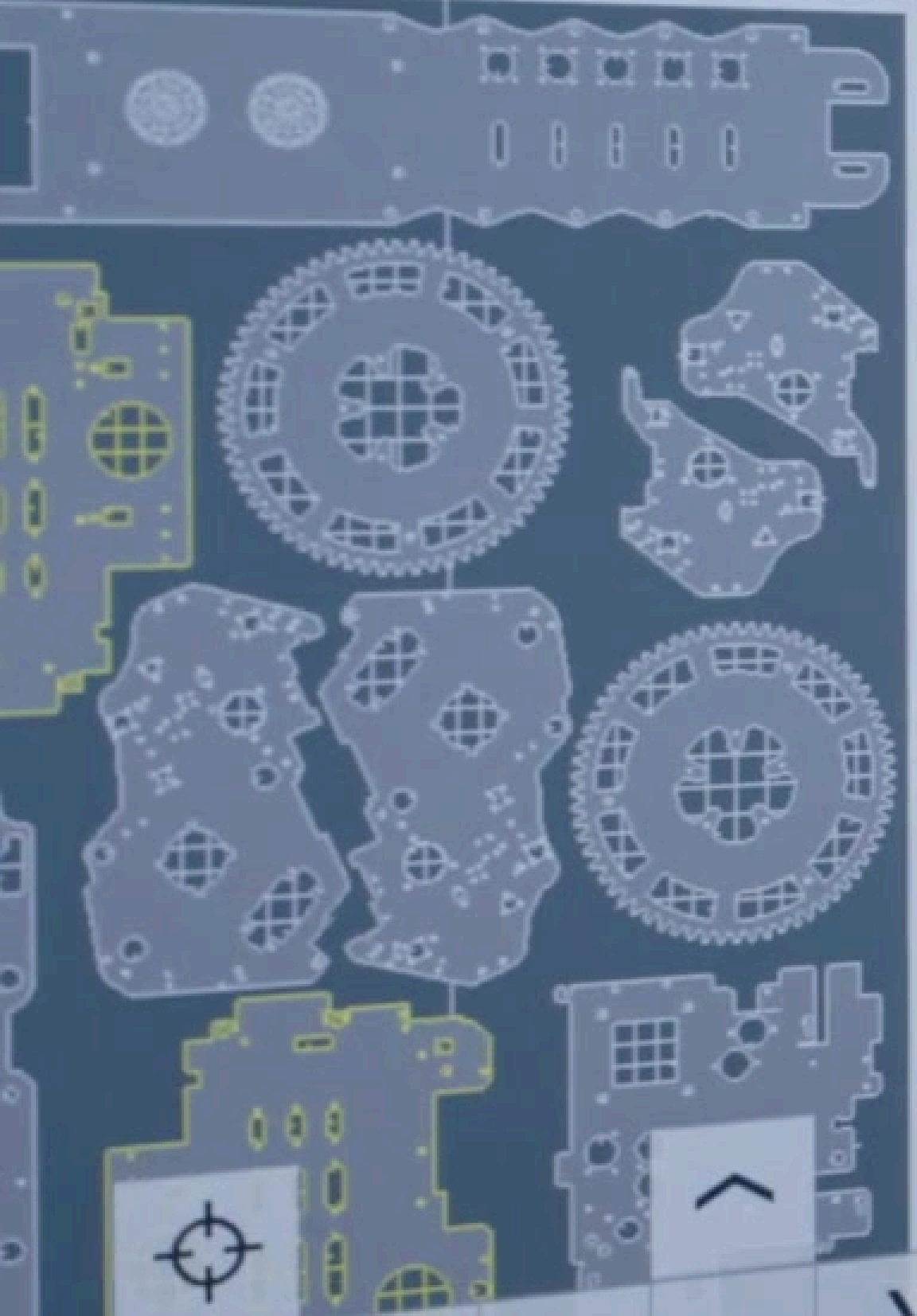
6kw TruLaser 1030 Fiber with TruStore Automation






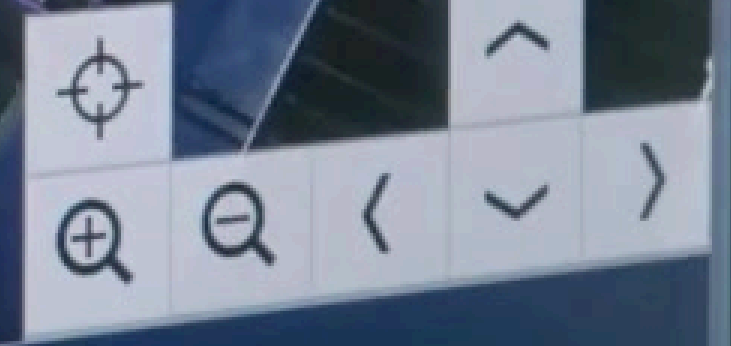
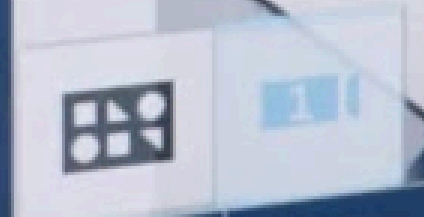
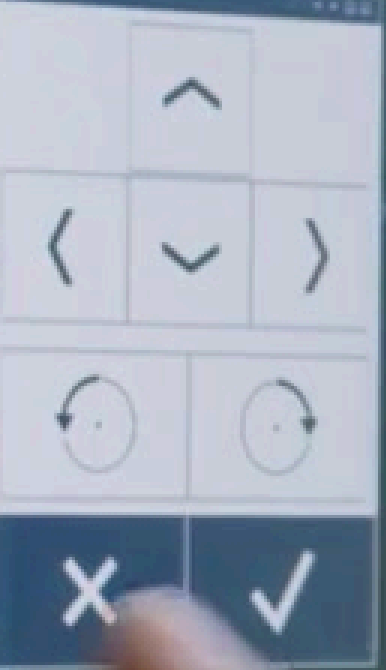
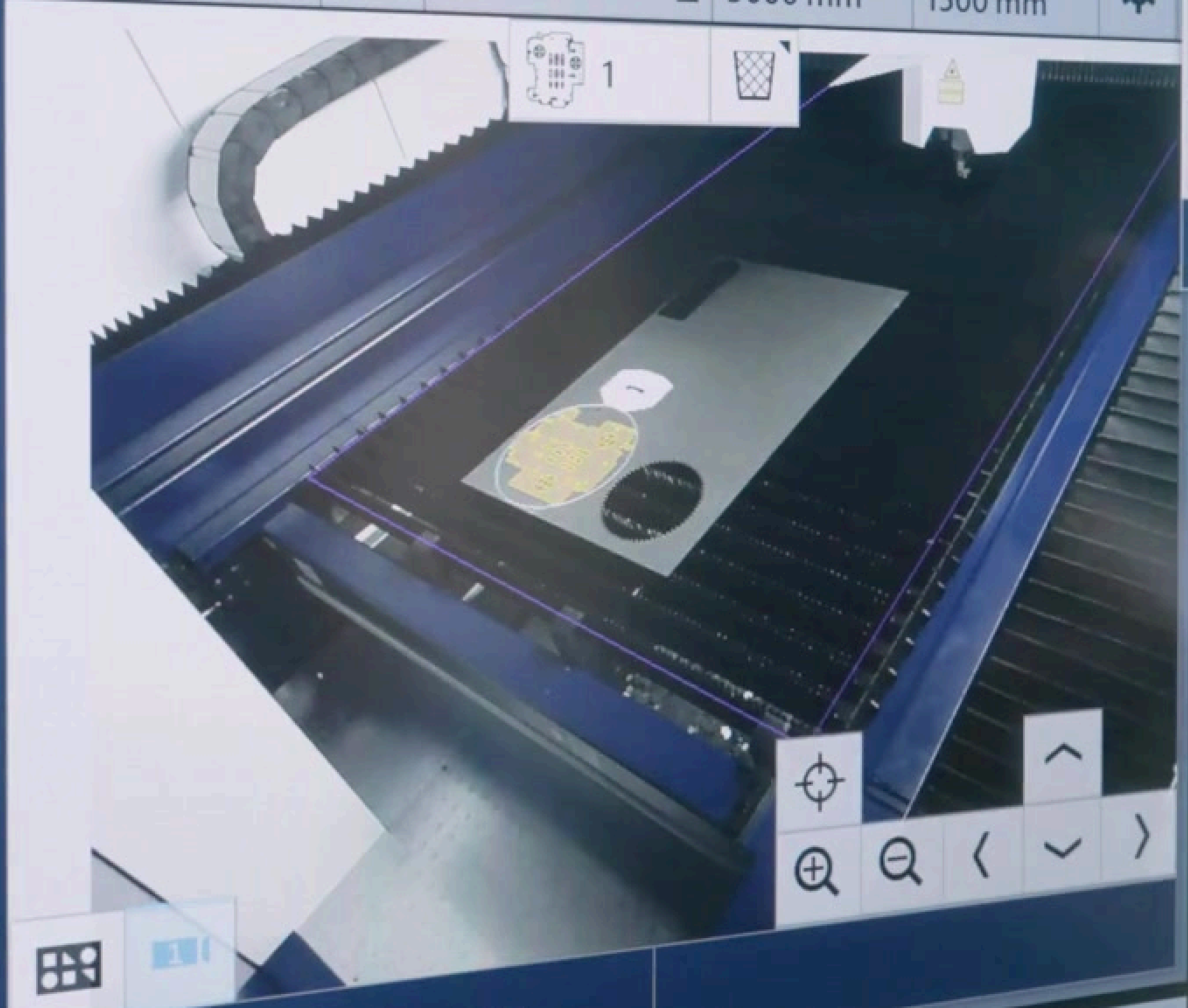



- **Reduce Material Handling Time**
- **Larger Metal Inventory - Reducing Lead Times**
- **Faster Cut Speeds with Newer Technology**
- **8 Pallets of Raw Metal**
- **2 Pallets of Support Completed Part Nest**

FEL_1



Move cutting unit  Separating cut **None**  Sheet format X **3000 mm** Sheet format Y **1500 mm** 



 Save program

Next press
End of program
100%



HANDHELD FIBER LASER WELDING

T
TÉCNICO



Maximum Welding Capability
For Minimal Rework



Pre-Weld Cleaning
for Improved Weld Quality



Post-Weld Cleaning
for Improved Visual Appearance

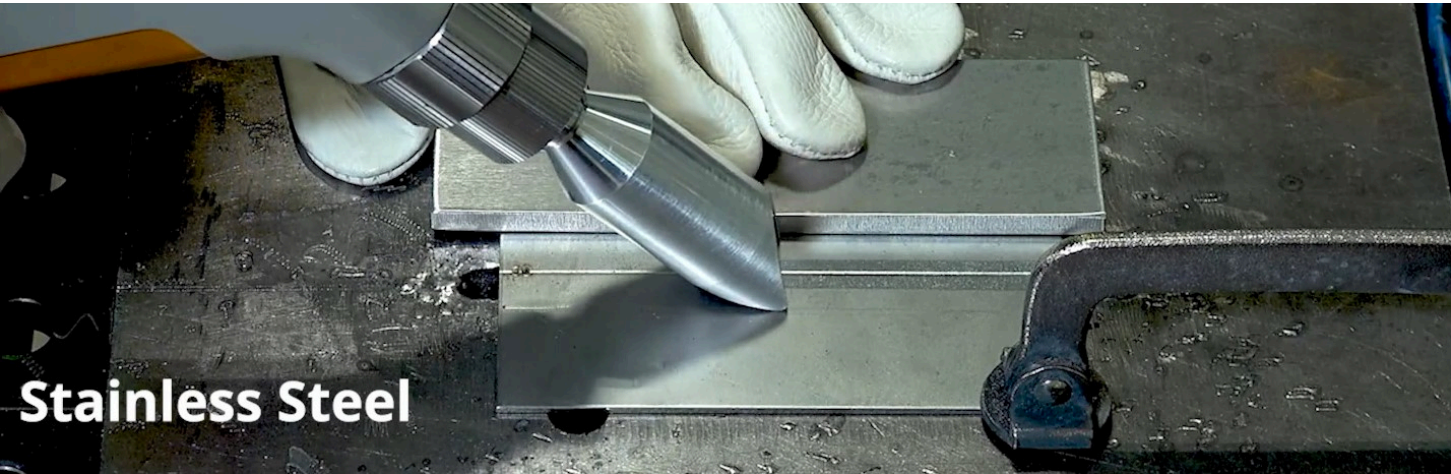


Welding & Cleaning
In a Single System

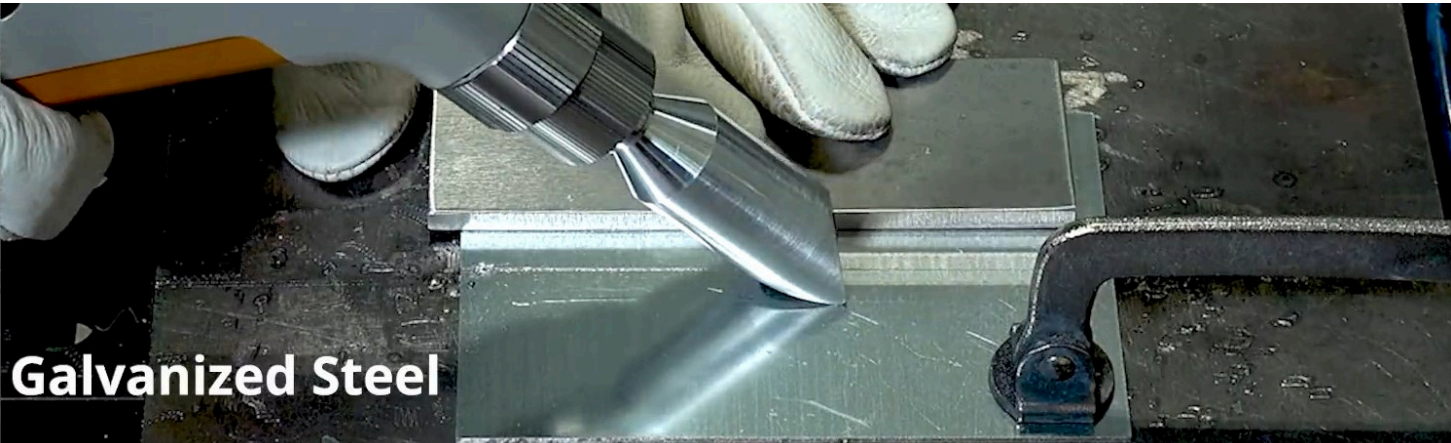


REVOLUTIONIZING WELDING

TURNKEY HANDHELD LASER WELDING & CLEANING SYSTEMS



Stainless Steel



Galvanized Steel



Mild Steel



.040" Titanium Ti64



0.25" 5052 Aluminum

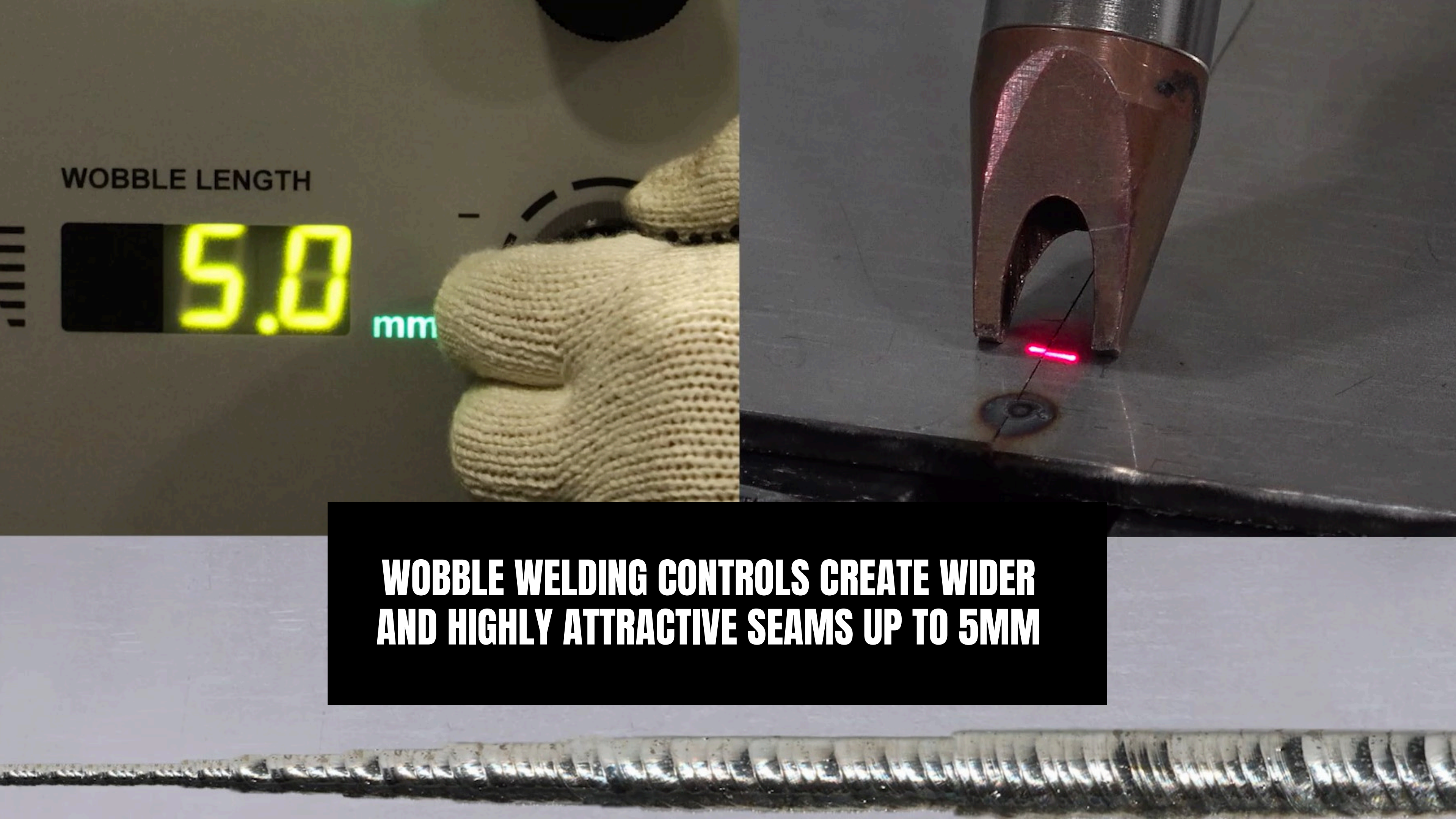
Material	Thickness Single Side weld
Stainless Steel	up to 6.35 mm
Galvanized Steel	up to 6.35 mm
Mild Steel	up to 6.35 mm
Aluminum	up to 6.35 mm
Copper	up to 2 mm
Titanium	up to 5 mm
Nickel Alloy	up to 5 mm

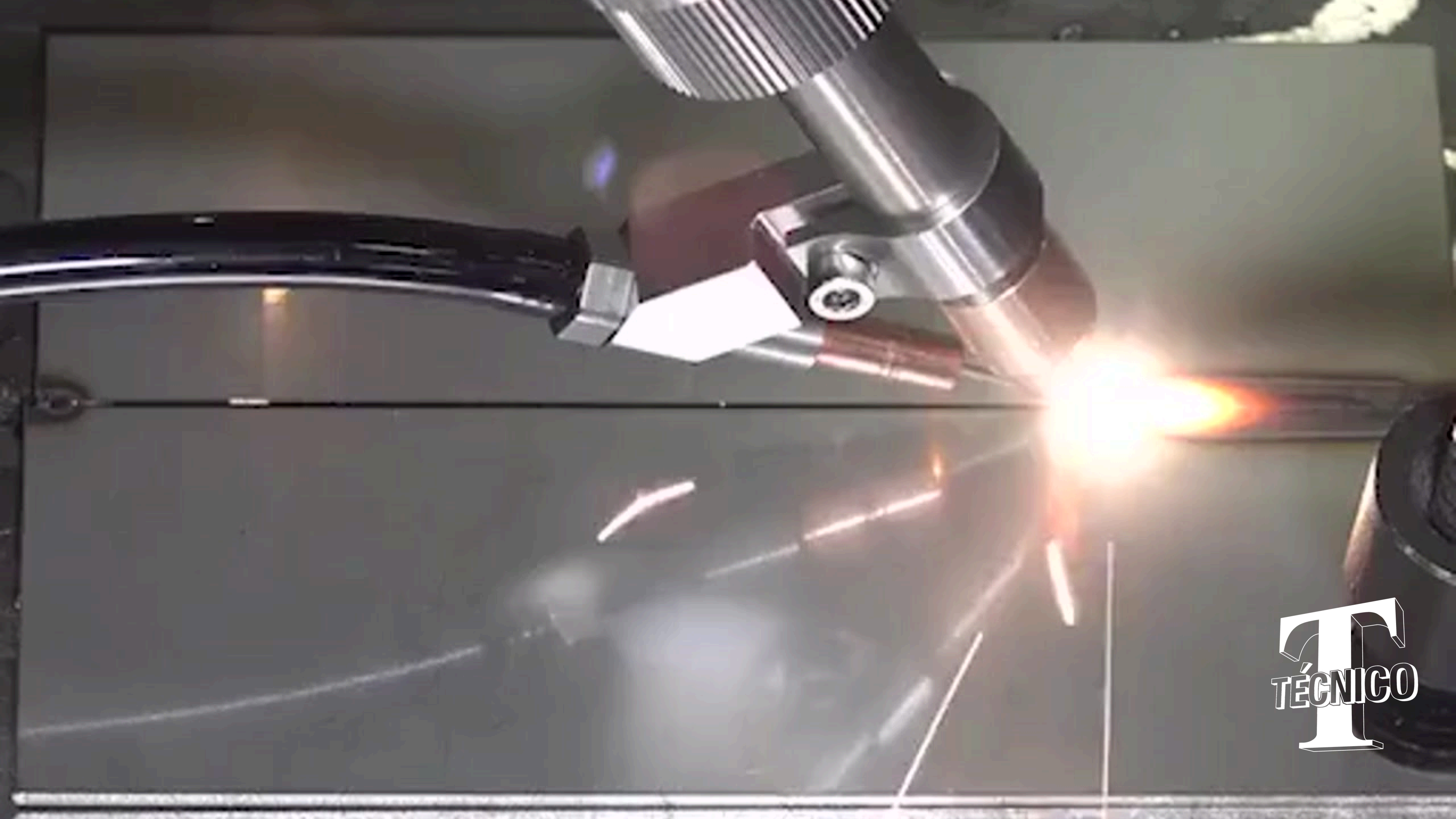
WOBBLE LENGTH

5.0

mm

**WOBBLE WELDING CONTROLS CREATE WIDER
AND HIGHLY ATTRACTIVE SEAMS UP TO 5MM**





T
TÉCNICO

LASER POWER

600 W



INTERLOCK

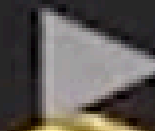


GAS



MODE

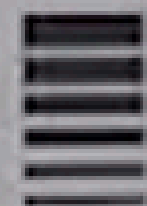
E1



WARNING

ERROR

WOBBLE FREQUENCY



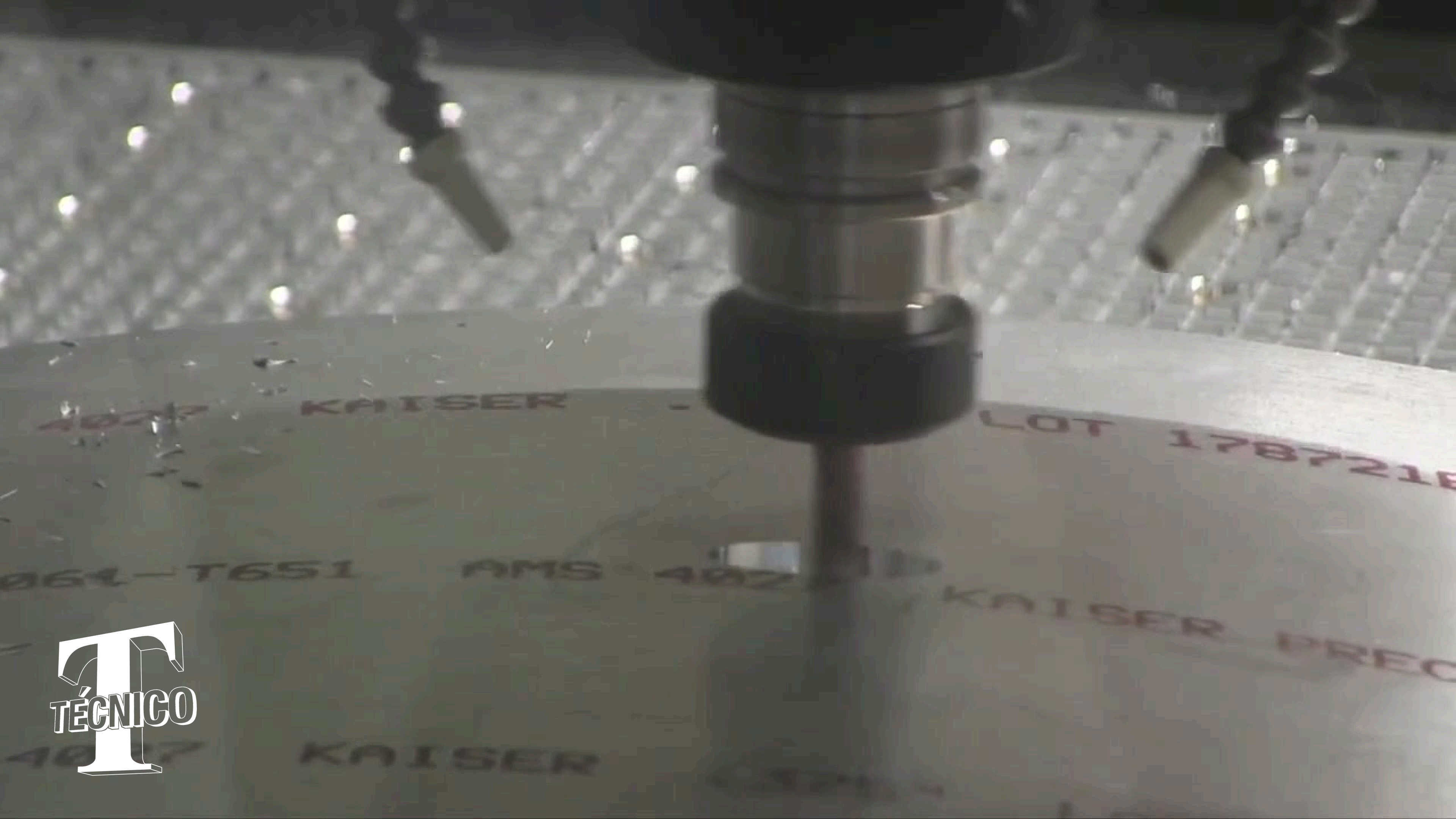
880

WOBBLE LENGTH





CNC MACHINING



KAISER

LOT 1787218

064-T651

AMS 4027

KAISER PREC

KAISER

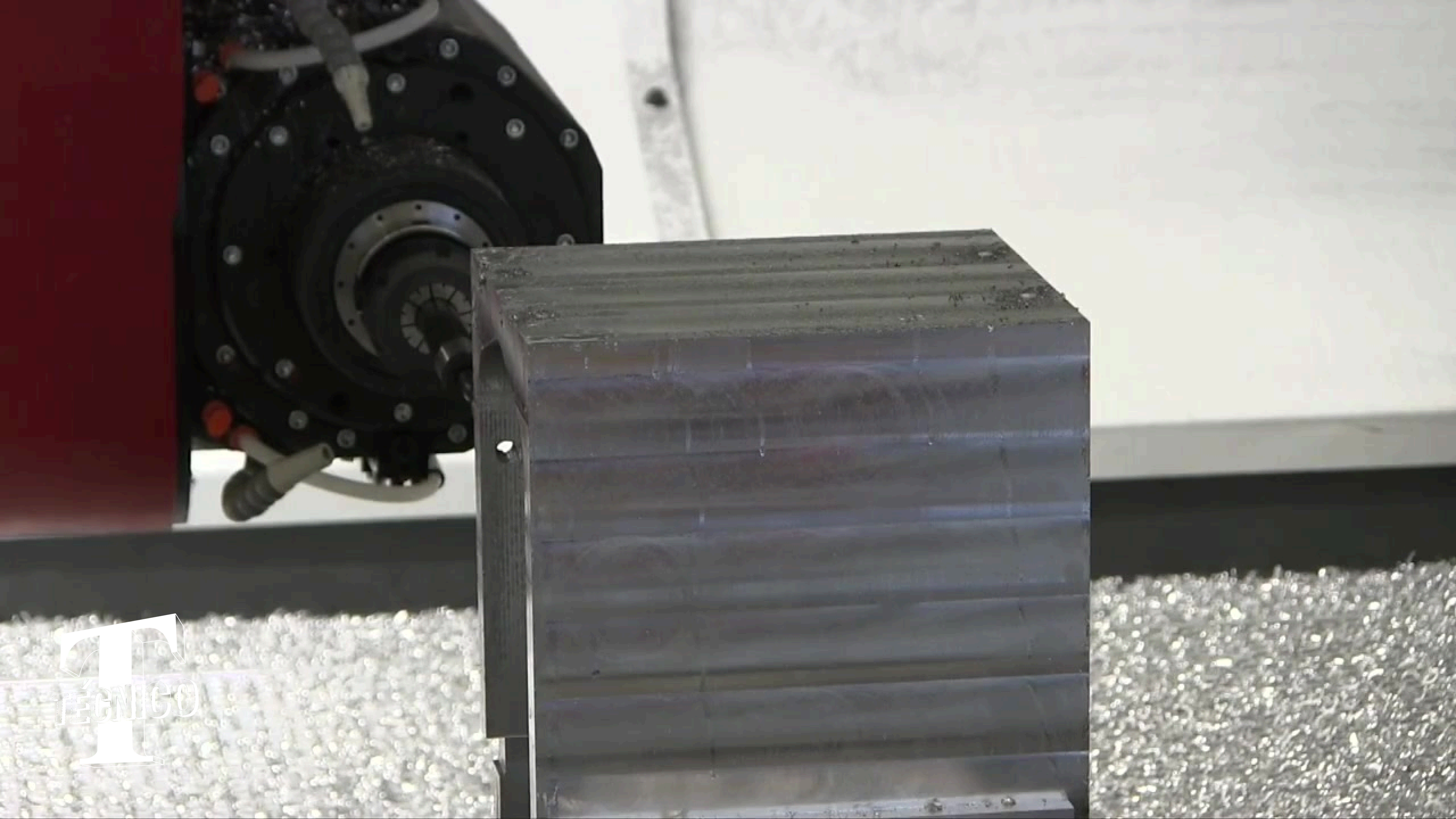
T
TÉCNICO

S-SERIES

5-AXIS

CNC MACHINE



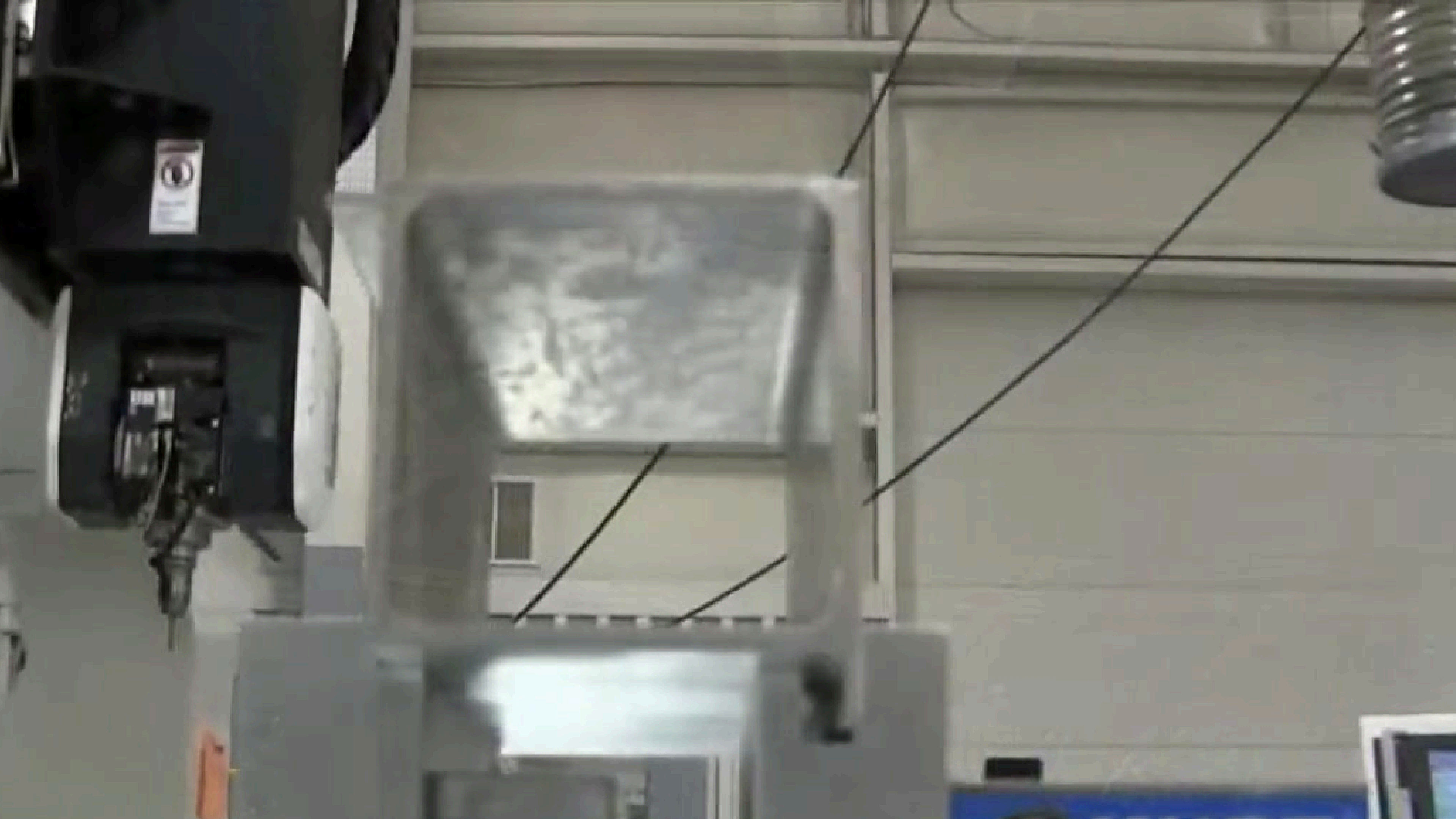


T
TÉCNICO



- Wood Composites
- Composites
- Aluminum Block
- Nomex Core Honeycomb Panels
- Aluminum Honeycomb Panels
- Metal Joiner Doors







EXIT



5 AXIS

AA-120



| CNC Panel Bender

T
TÉCNICO







- **Stainless Steel | Aluminum | Carbon Steel**
- **Software Control - Professional Graphic Control on Swivelling Arm**
- **Clamping Beam**
- **Folding Beam**
- **Foot Switch**

PB-PROF-ROT	Produkt	1051	Material	Benutzer	9
Schroeder_Server	0001: m1	Stahl, 3.00mm	Administrator (admin)	V4.0.6015	
					0
Auswahl Produkt			2016-07-19 08:15:42 7000		
<div>Products</div>			<div><div></div><div></div><div></div><div></div><div></div><div></div></div>		
<div><div>★</div><div></div><div></div><div></div><div></div><div></div></div>			<div>Abbrechen</div> <div>Zurück</div> <div>Weiter</div> <div>Fertigstelle</div>		
<div>Menü</div>			<div>Auswahl Produkt</div>	<div>Bemaßung</div>	<div>Ablauf</div>
			<div>Fertigung</div>	<div>Handbetrieb</div>	



T
TÉCNICO



| Robotic Welding Cell



T
TÉCNICO

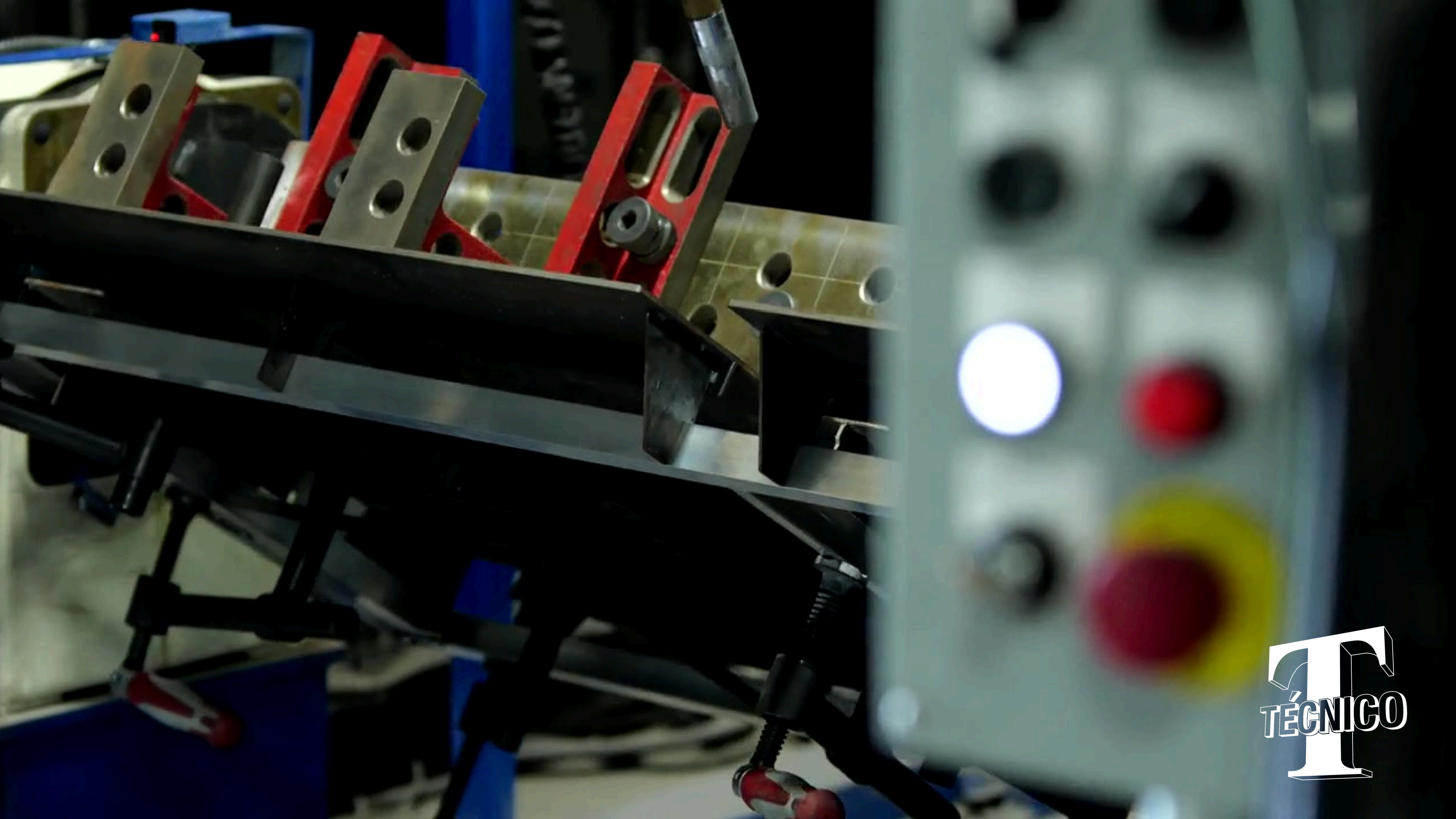
Fusion ABC X



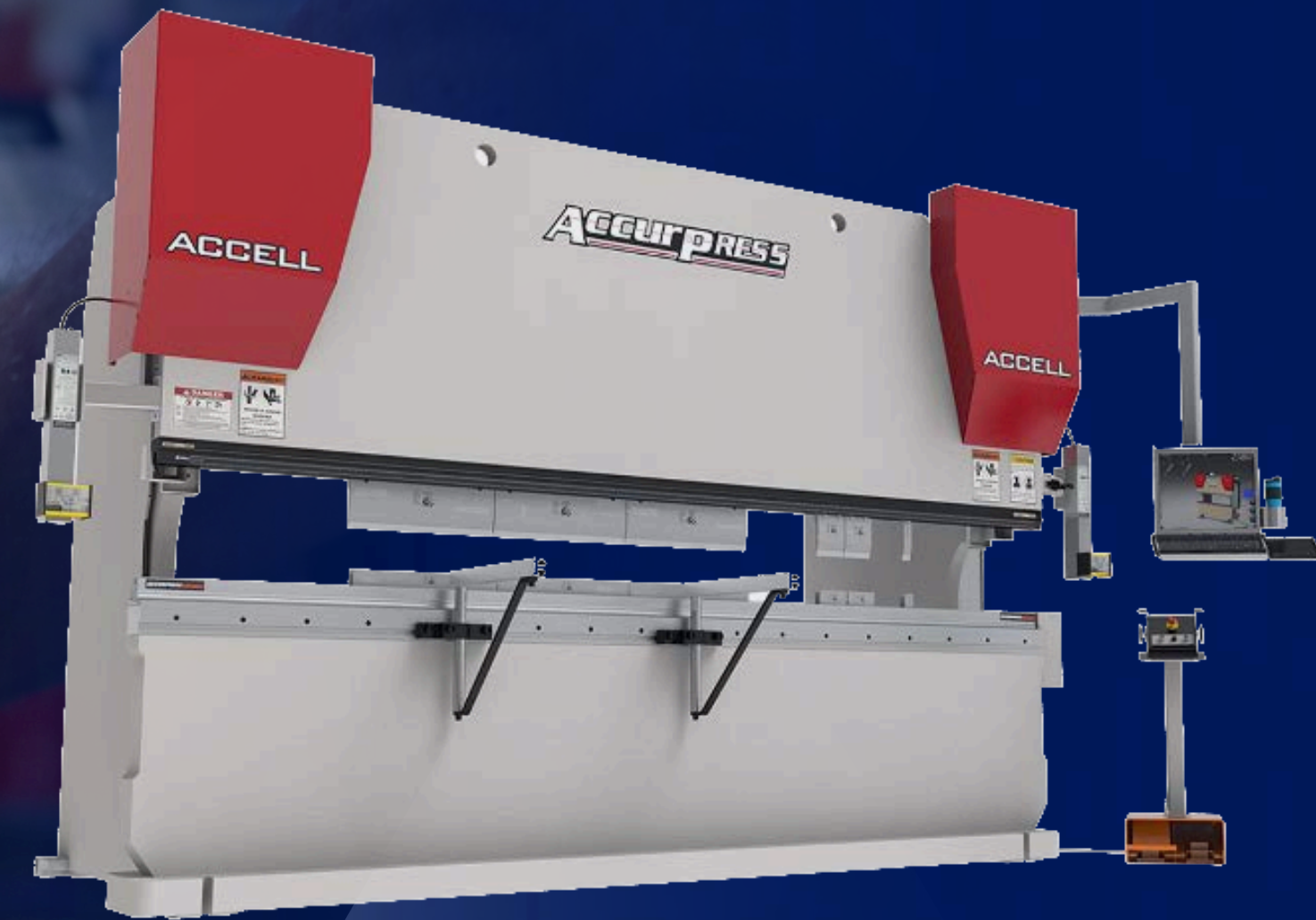
T
TÉCNICO

- **Stainless Steel | Aluminum | Carbon Steel**
- **Composites**
- **Aluminum Block**
- **Nomex Core Honeycomb Panels**
- **Aluminum Honeycomb Panels**
- **Metal Joiner Doors**





CNC Press Brake







T
TÉCNICO



AUTOMATED EXCHANGE OF DATA



Profile Program Thickness Adj

Part/Lot

Profile 1

Thickness Adj

Part

Mat Material

Thk Thickness

Lot

Qua Quantity

Qua Quantity Produced

Mea Measured Thickness

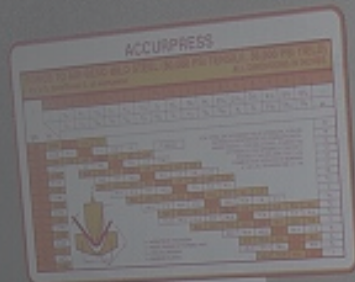
Not Notes

THE VISION 3D CONTROL

Working with Solidworks on Inventor, Vision 3D lets you import part models for:

- Full 3D Programming
- Bend Visualization
- Dynamic Viewing during the Forming Process

ACCURPRESS

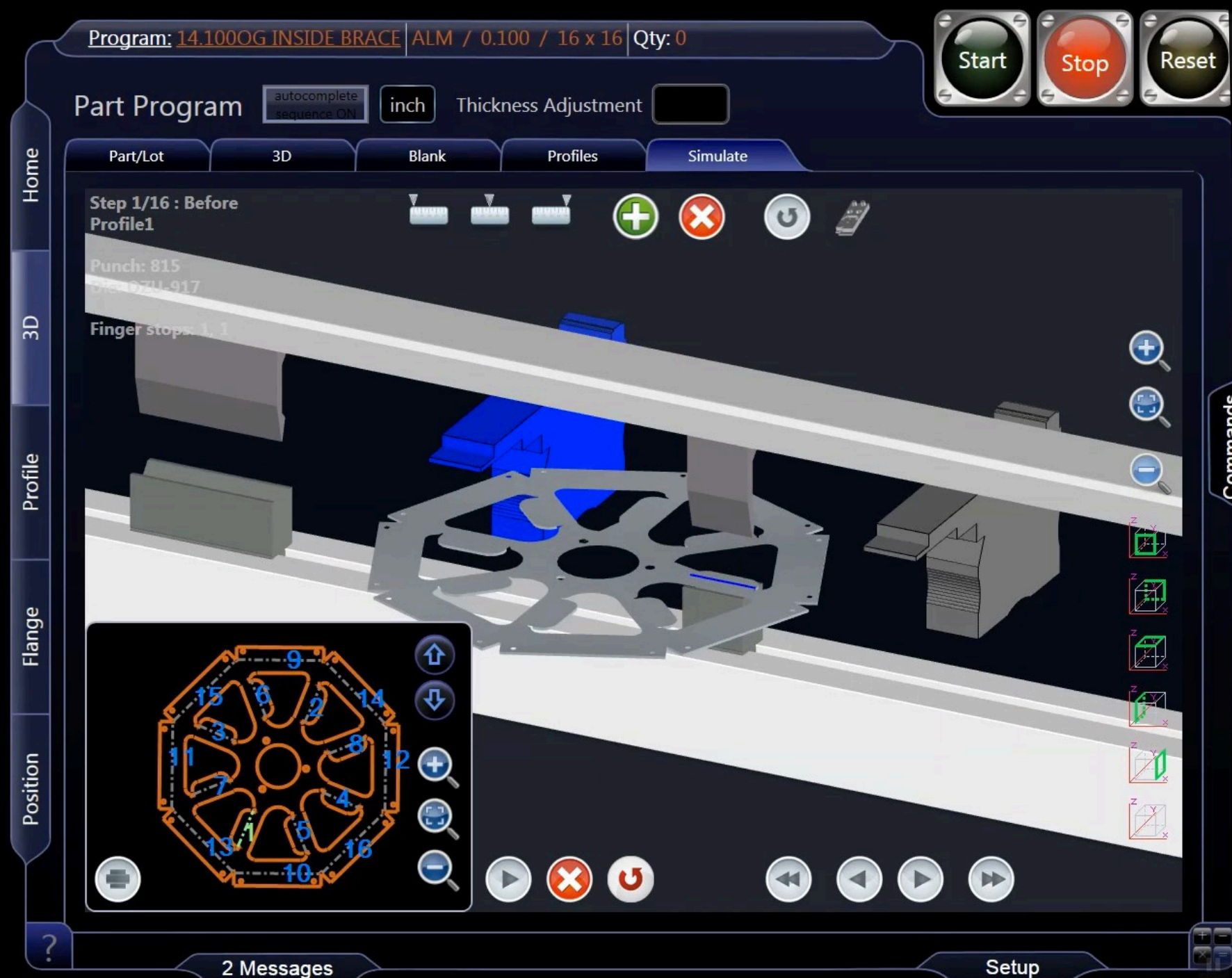


ADVANCED PERSONNEL ONLY

412010



T
TÉCNICO

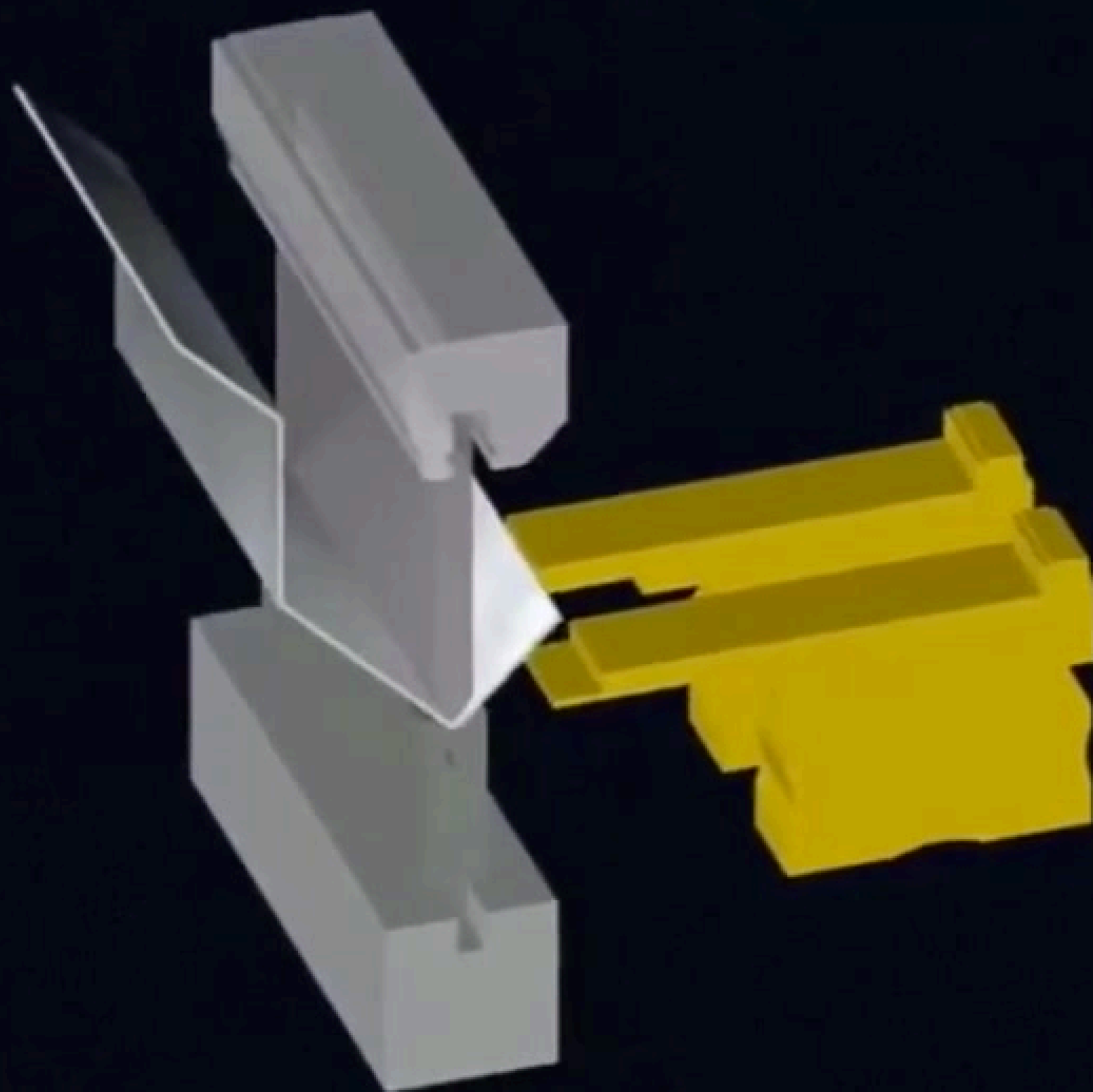


DIGITAL FORMING SOFTWARE

VISION
ACCURPES

After

1-024
163



THE STRENGTH BEHIND THE FLEET.

UNWAVERING COMMITMENT, CONTRIBUTING TO AMERICA'S ECONOMIC PROSPERITY, MILITARY STRATEGY AND NATIONAL SECURITY.

T
TÉCNICO



**QUALITY & SAFETY:
UNWAVERING COMMITMENT TO ETHICAL & RESPONSIBLE BEHAVIOR**





ONE TEAM. BETTER EVERY DAY.

TÉCNICO CORPORATION

MARINE & INDUSTRIAL CONTRACTOR

www.tecnicocorp.com

